



Terminalia of *S. interrupta*. Compare with the diagram at the centre of page p.104. Arrows indicate the area shaded in the diagram on p.104.



S. scripta
Couplet 3: genitalia seen from below.



S. philanthus
Couplet 5: genitalia seen from below.

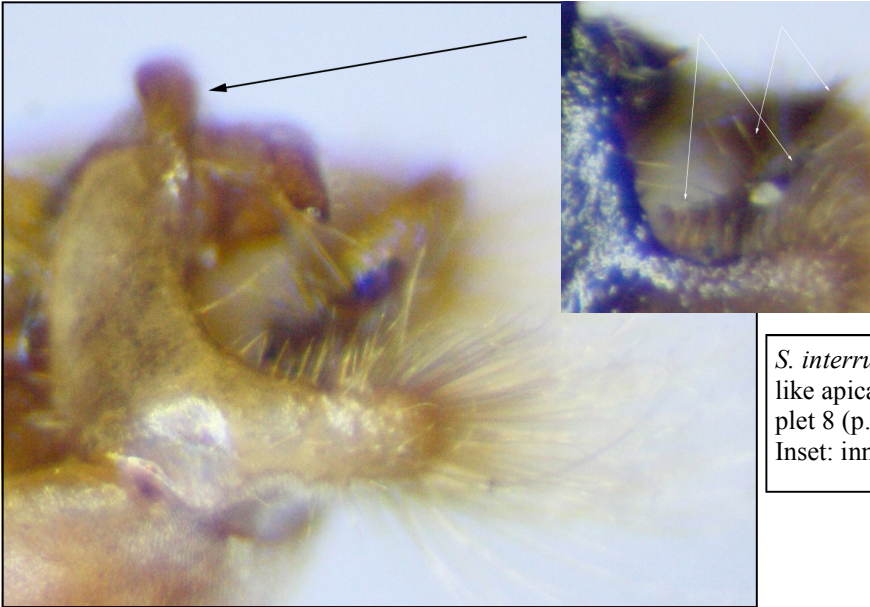


S. interrupta
Couplet 5: genitalia seen from below.

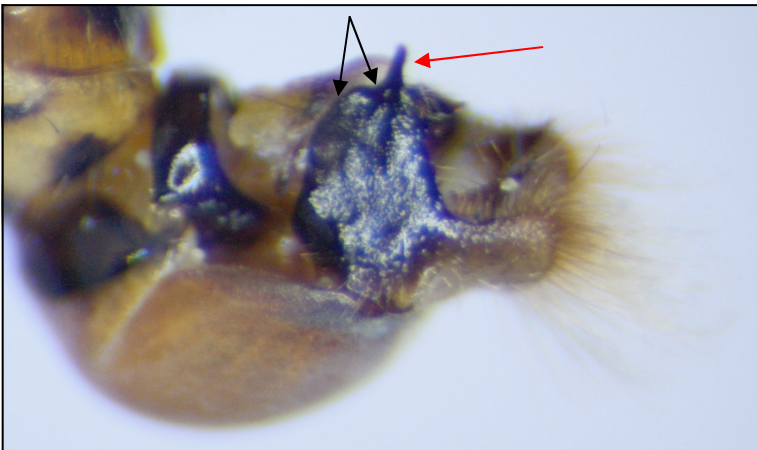


S. scripta - lateral view of terminalia. Compare with the diagram in couplet 3 (p.105)

Inner processes arrowed



S. interruptus. Lateral view with the thumb like apical tooth arrowed. Compare with couplet 8 (p.106).
Inset: inner processes arrowed.



S. philanthus. Lateral view. The Broad, toothed lobe is arrowed (note also the narrow apical tooth on the lobe; arrowed in red). Compare with couplet 4 (p.105).

BELOW: *S. fatarum*. Lateral view. The small tooth on the inner curve of the surstylus is arrowed in red. This is easy to overlook!

The broad shoulder of the lobe is arrowed in white.

